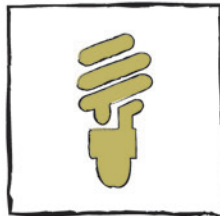




Space to BREATHE



Spacesaver's Commitment to Sustainability



Space to BREATHE

Spacesaver creates products that inspire smarter, more responsible uses of space. But sustainability encompasses more than just creating quality products. It is a commitment to protect and give back to our local and global community through environmentally friendly manufacturing practices and corporate stewardship. At Spacesaver Corporation we respect the environment and strive to preserve the availability of natural resources for future generations. We don't just create space-saving solutions; we create space to breathe.





SPACESAVER PRODUCTS INSPIRE sustainable design:

Spacesaver's commitment to sustainable product design began with the foundation of our business in 1972 by Theodore W. Batterman. Increases in land, building and energy costs, coupled with productivity decline, enabled him to create a new industry, high-density mobile storage. These factors are even more prevalent today.

High-density storage creates more capacity in a smaller footprint, alleviating some of the burden placed on interior space allocations. Alternatively, the use of mobilized storage can reduce the size of the building footprint resulting in savings on construction, material, and operational costs, while preserving the surrounding natural landscape.

Over the last 40 years, we have continued to produce storage and shelving solutions designed, engineered, and manufactured to save space. As our product line has evolved and our presence expanded, so has our commitment to sustainable design. Today we offer mobile shelving options manufactured with 30% less steel, and local support from storage experts that understand how to develop storage solutions that balance end user needs with their sustainability goals.

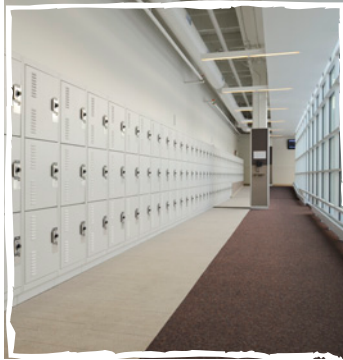
Our storage solutions:

- ♻️ Contain an average of 75% recycled steel
- ♻️ Integrate alternative materials such as acrylic and glass
- ♻️ Can be constructed using an optional NAUF (no added urea formaldehyde) particleboard
- ♻️ Can be reconfigured, reused, and relocated in order to prevent disposal before the end of the product's useful life

All Spacesaver products meet the more stringent requirements of Indoor Advantage Gold™ Certification. SCS indoor air quality certification programs are compliant to CA 01350 and ANSI/BIFMA M7.1 test methods.

We also recognize the importance of supporting the LEED (Leadership in Energy and Environmental Design) Green Building Rating System. It is because of this commitment, that we became members of the USGBC (US Green Building Council), and CaGBC (Canada Green Building Council).







INTERNAL WASTE MANAGEMENT strategies:

Over the last several years, Spacesaver Corporation has executed various waste management and reduction activities to protect both human health and the local environment. Through collaboration with Foth Infrastructure and Environment, LLC., Spacesaver has implemented a spill prevention control and countermeasure plan, as well as a storm water and pollution prevention plan. In addition, the following actions are executed as part of the Spacesaver Corporate Environmental Policy that has been in place since 2001.

- ♻ Annual air emissions inventory is completed with State of Wisconsin DNR and the EPA
- ♻ Waste oil from machines is sent to an oil recycling facility
- ♻ Waste oil from steel is skimmed off the top of wash bins and sent to an oil recycling facility
- ♻ Raw Steel (bare or galvanized) and aluminum scrap from the fabrication process is collected and picked up by a recycler
- ♻ Painted product scrap is segregated from raw steel and picked up by a recycler
- ♻ Corrugated packaging, newspapers, magazines, office and production paper are recycled
- ♻ PC Board, LCD and CRT monitor recycling is available on-site
- ♻ Controls in our painting process reclaim about 75% of the over sprayed powder
- ♻ Unusable wood is picked up by a recycler
- ♻ Paper check stubs have been eliminated





ENERGY CONSERVATION efforts:

In 2007, Spacesaver received the Wisconsin State Award for Energy Use Reduction. It is an honor that continues to propel our organization each and every day to adopt more innovative and effective energy conservation strategies.

A five-year roofing upgrade project was executed to include roofing products with additional R-value. The project was completed in 2010, and each upgrade has been recognized by Wisconsin Focus on Energy as an Energy Efficient Measure (EEM).

Heat from paint ovens and compressors is re-distributed throughout the manufacturing facility, maximizing heat reuse from manufacturing processes. In addition to the heat re-distribution strategy, existing infrared heating units were retrofitted with an Ethernet capable temperature control and power supply, allowing plant maintenance actual desktop control of the heating units.

In addition to these large energy conservation projects, the following actions are executed as part of the Spacesaver Corporate Environmental Policy:

- ♻️ Forklifts are electric/battery powered when possible
- ♻️ Corporate Energy Conservation Policy has been in place since 2006, which includes the following:
 - ♻️ All electronic devices, such as computers, etc., are to be turned off at the end of each business day
 - ♻️ It is the responsibility of each supervisor or the last person to leave the department to ensure all the lights in his or her area are turned off at the end of each business day
- ♻️ If working on a weekend, it is the employee's responsibility to turn off all lights and electronic devices before leaving the building
- ♻️ Warehouse lights should only be used in areas that employees are actively working, and it is the responsibility of the Field Service Department to make sure they are turned off at the end of the day

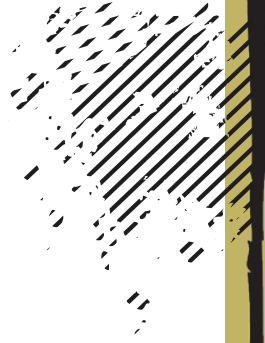




NATURAL RESOURCES actions:

In order to preserve the availability of natural resources for future generations, we at Spacesaver take precautions both locally and globally. In addition to standard storm water site compliance inspections on a quarterly basis, we strive to preserve water quality and quantity with a reverse osmosis water treatment process on-site, which discharges potable processing water. This has reduced the amount of sanitary discharge to the city water treatment facility by 20,000 gallons a day. In addition:

- ♻️ Water is recycled in the paint washer process
- ♻️ Water is adjusted for pH in a pretreatment process before it is discharged to the City of Fort Atkinson's Wastewater Treatment Facility for final treatment
- ♻️ Spacesaver uses a chemical that is low in phosphates in all five powder coat paint lines
- ♻️ Spacesaver provides volunteer support time to organizations focused on conservation
- ♻️ Employees are allowed to telecommute
- ♻️ Spacesaver uses truck carriers that are part of the US EPA SmartWay Transportation Partnership
- ♻️ Spacesaver Corporation maintains a prairie and wetland area of over seven acres on the property





SOCIAL ACTIONS AND EDUCATION efforts:

Spacesaver recognizes sustainability as a commitment to protect and give back to our local and global community.

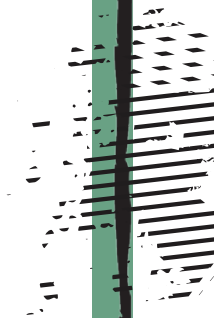
At Spacesaver's 25th Anniversary celebration on October 17, 1997 Ted Batterman, (former President & CEO), announced the Batterman Grant Application program, intended to encourage Spacesaver employees to volunteer in the communities and areas surrounding Fort Atkinson and Janesville. Recipients of the grant since 1997 include (but are not limited to):

- ♻️ Fort Atkinson High School
- ♻️ Faith Community Church
- ♻️ Rock River Free Clinic

We also support our community and our employees through:

- ♻️ On-site LEED® preparation classes
- ♻️ The Spacesaver "green team" dedicated to internal and external sustainability initiatives
- ♻️ Employee sponsored battery recycling program since 2010
- ♻️ Becoming a non-smoking facility
- ♻️ Providing tuition reimbursement programs to employees
- ♻️ Corporate and employee involvement in a United Way Campaign each year, cumulating in over \$200,000 in donations since 2006
- ♻️ Annual support for the American Cancer Society's Relay for Life







Spacesaver Corporation
1450 Janesville Avenue
Fort Atkinson, WI 53538-2798
1-800-492-3434
www.spacesaver.com



KI
1330 Bellevue Street
P.O. Box 8100
Green Bay, WI 54302-8100
1-800-424-2432
www.ki.com